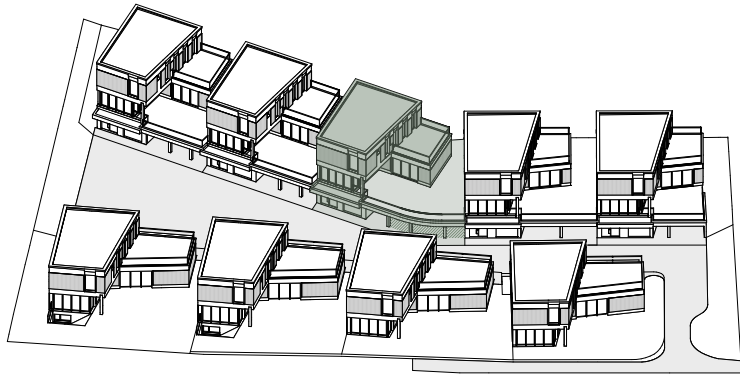


GISLERACHERWEG 6



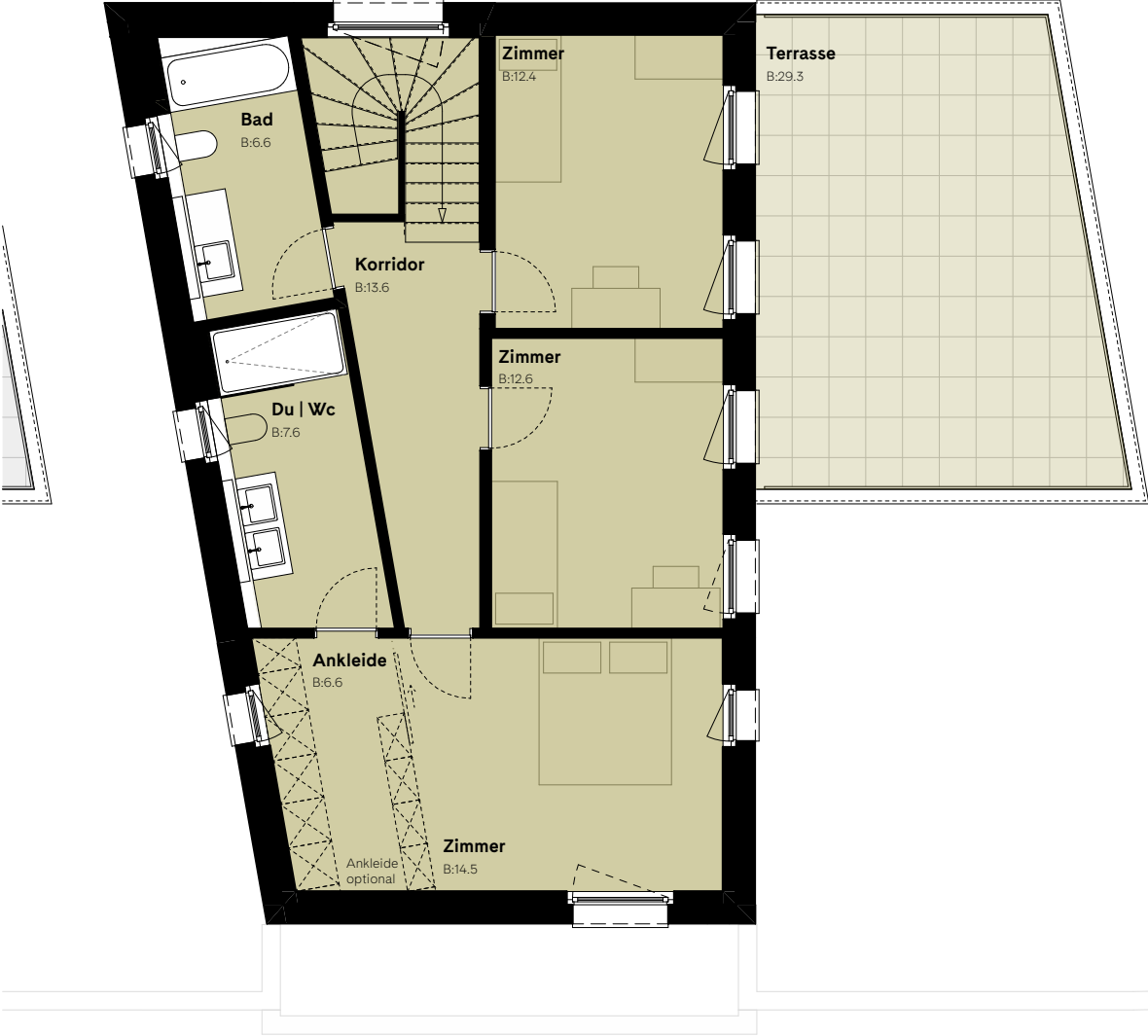
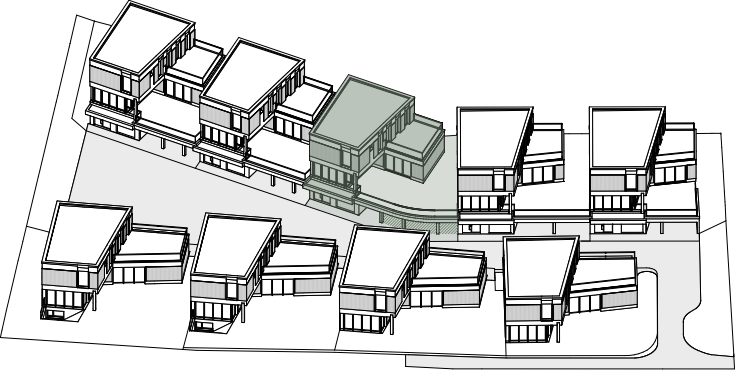
5.5 ZIMMER – EINFAMILIENHAUS INKL. ABSTELLRAUM

| | |
|--------------------------|---------------------|
| Parzelle ca. | 284.3m ² |
| NGF | 257.4m ² |
| gesamte Aussennutzfläche | 55m ² |
| Sitzplatz | 25.7m ² |
| Terrasse | 29.3m ² |
| Garten | 129.3m ² |
| Garage | 18.6m ² |
| Carport* | 22.5m ² |

*exkl. Fläche für Nutzungsrecht PP Gisleracherweg 3,
exkl. Abstellfläche Velos allgemein

1. Obergeschoss 1:100

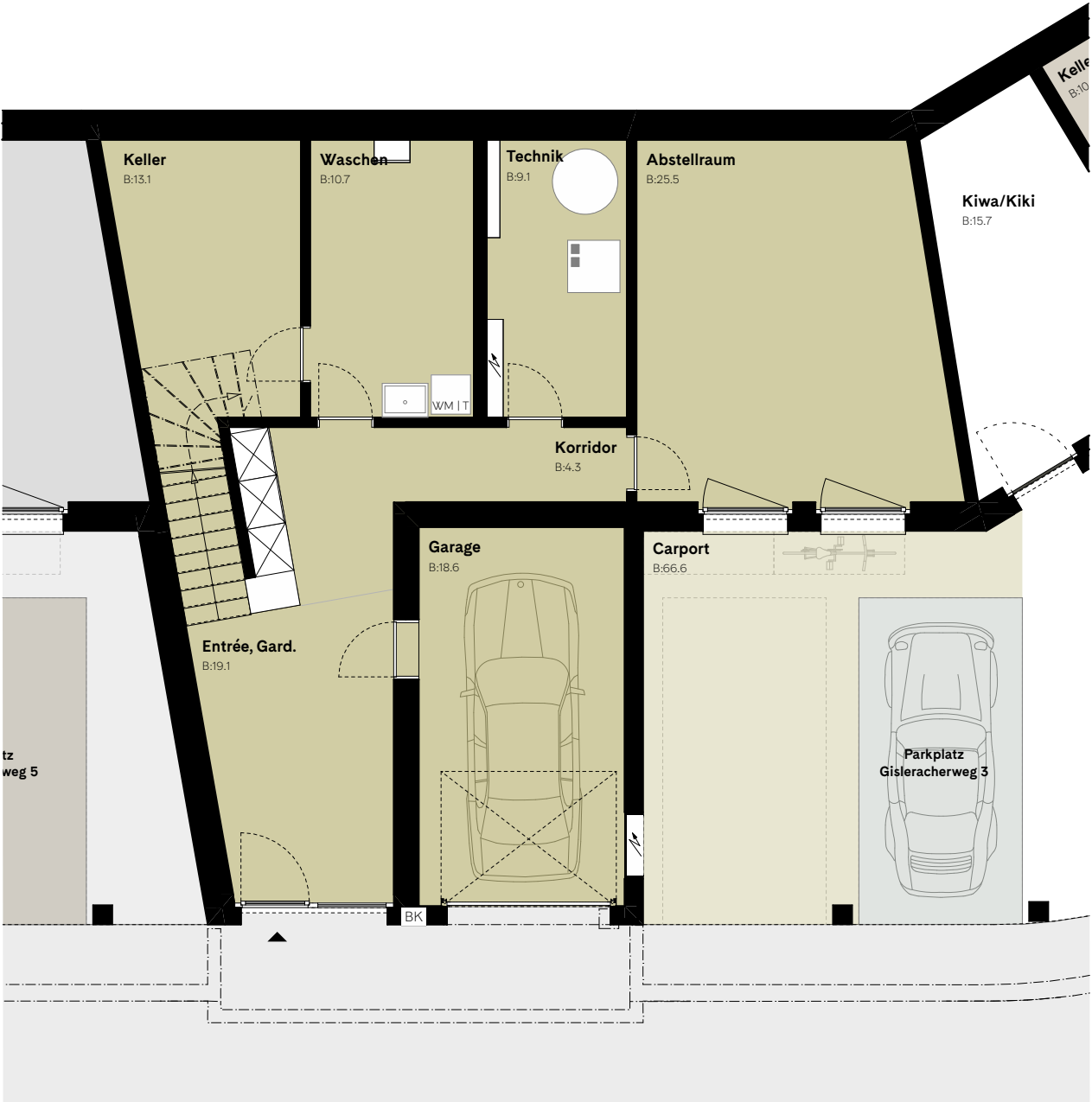
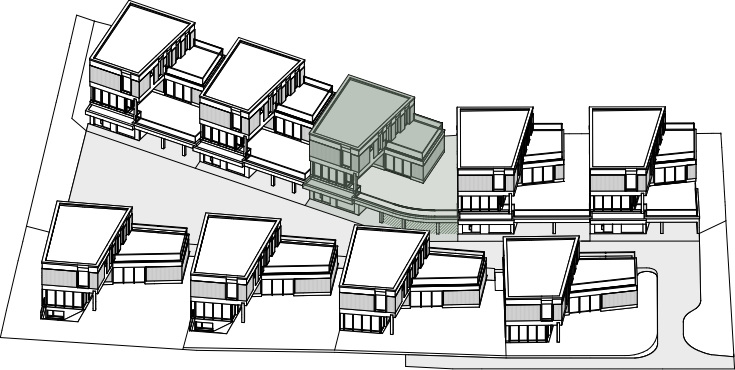




2. Obergeschoss 1:100

A scale bar showing a distance of 5 meters, divided into 1-meter increments. A north arrow is also present.

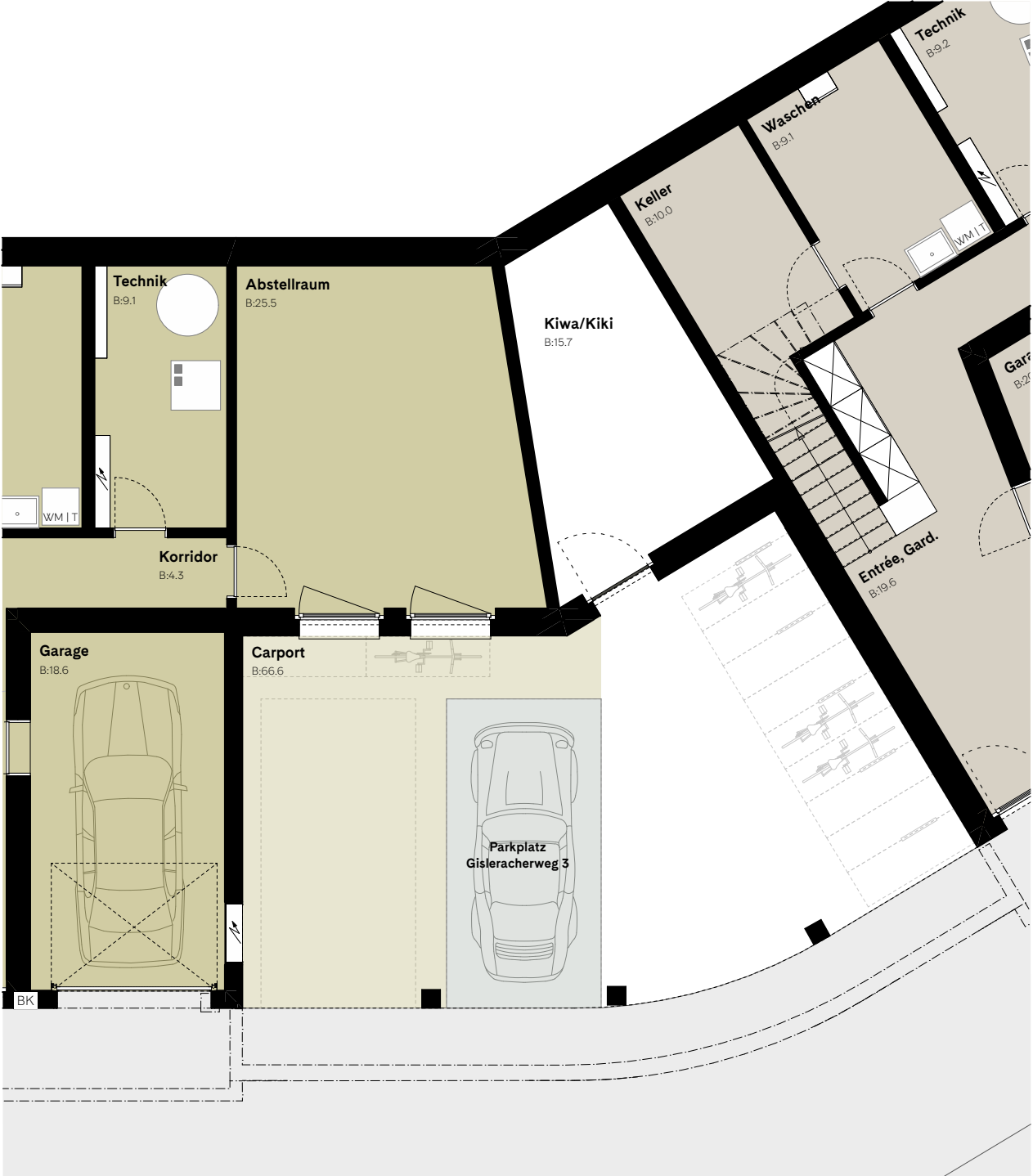
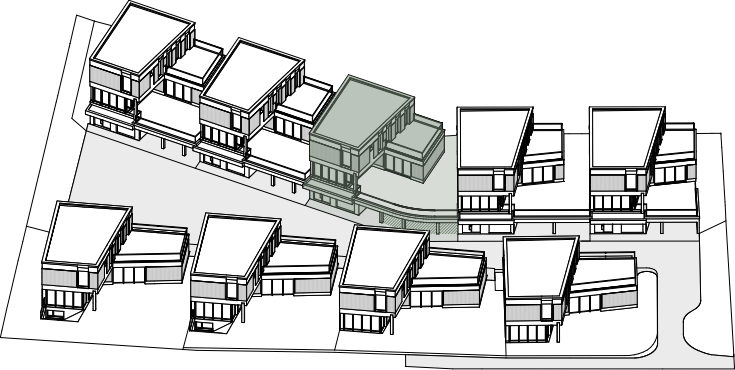
GISLERACHERWEG 6



Eingangsgeschoss 1:100

A scale bar showing a distance of 5 meters, with markings at 1, 2, 3, 4, and 5 meters. A north arrow is also present.

GISLERACHERWEG 6



Eingangsgeschoss – Carport 1:100

A north arrow pointing towards the top-left and a scale bar marked from 0 to 5 meters.