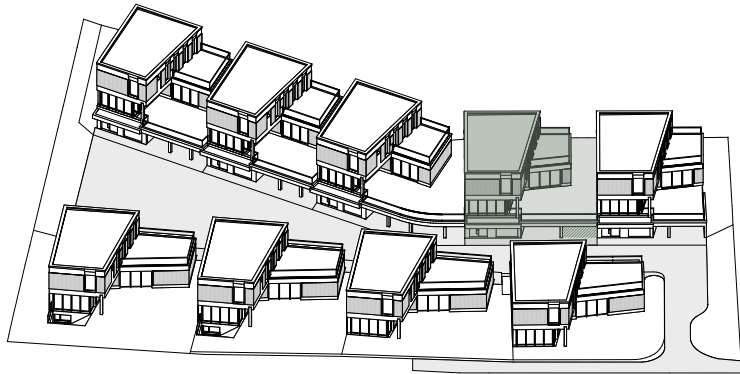


GISLERACHERWEG 4



5.5 ZIMMER – EINFAMILIENHAUS INKL. ABSTELLRAUM

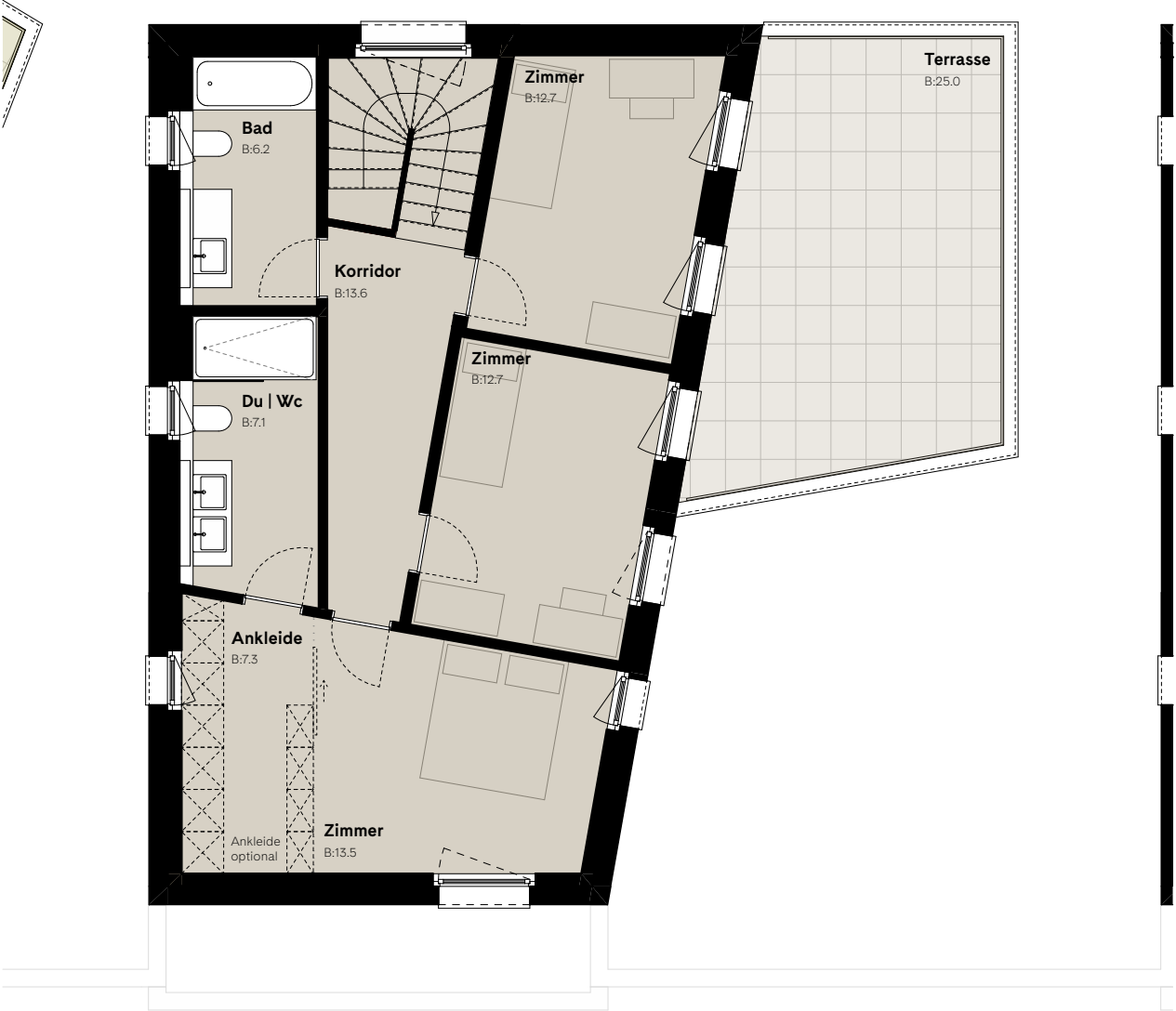
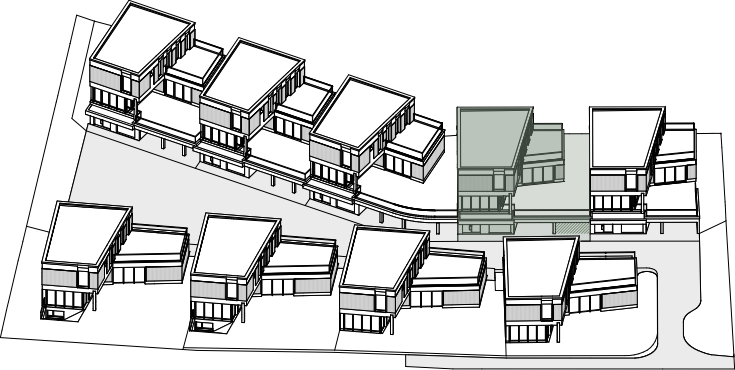
Parzelle ca.	255.5m ²
NGF	258.3m ²
gesamte Aussennutzfläche	47.9m ²
Sitzplatz	22.9m ²
Terrasse	25.0m ²
Garten	110.8m ²
Garage	20.7m ²
Carport*	35.8m ²

*exkl. Fläche für Nutzungsrecht PP Gisleracherweg 1

1. Obergeschoss 1:100



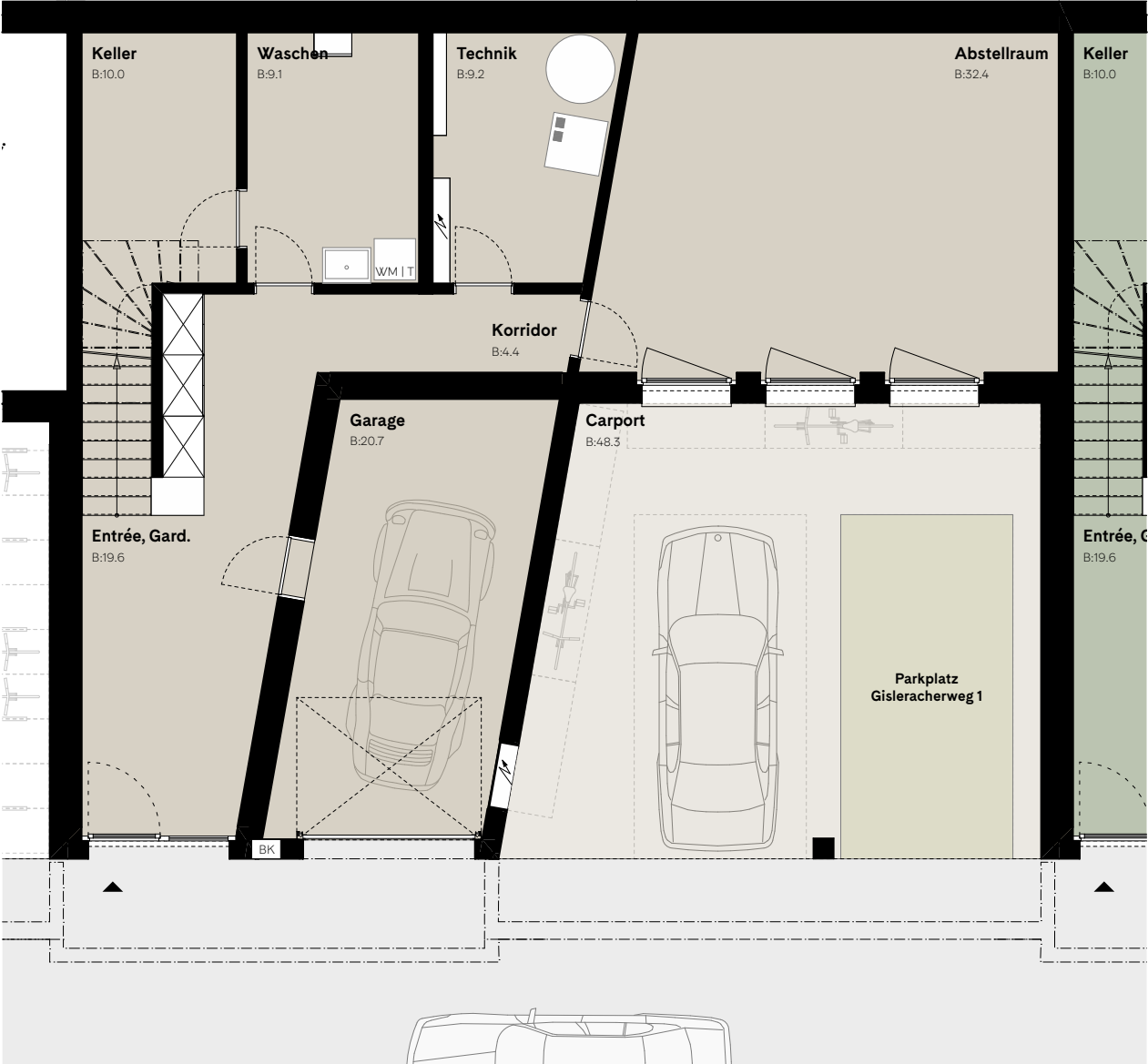
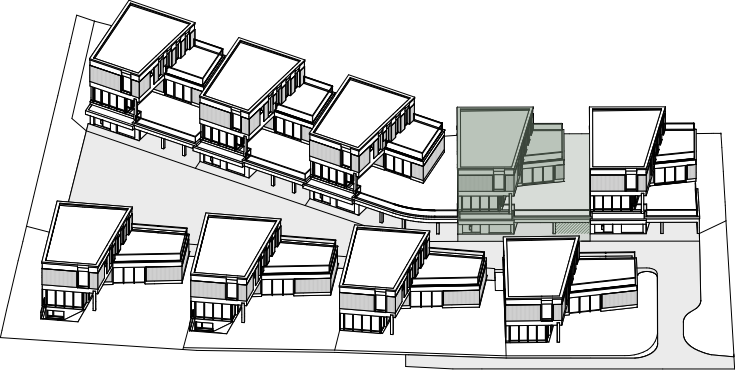
GISLERACHERWEG 4



2. Obergeschoss 1:100

A scale bar and a north arrow. The scale bar is marked from 0 to 5 meters. The north arrow is a simple cross symbol.

GISLERACHERWEG 4



Eingangsgeschoss 1:100

A scale bar showing a length of 5 meters, divided into 1-meter increments. A north arrow is positioned to the left of the scale bar.