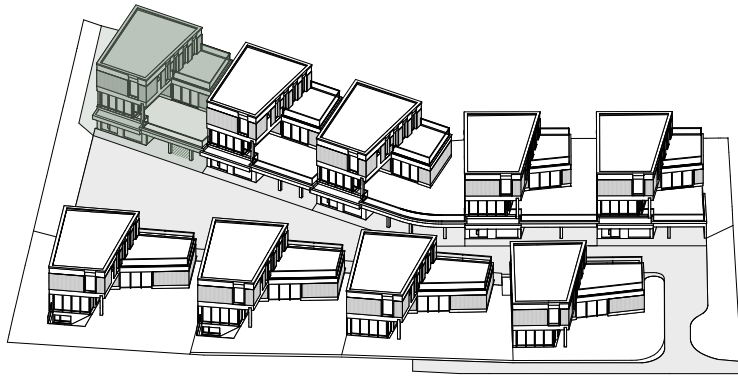


GISLERACHERWEG 10

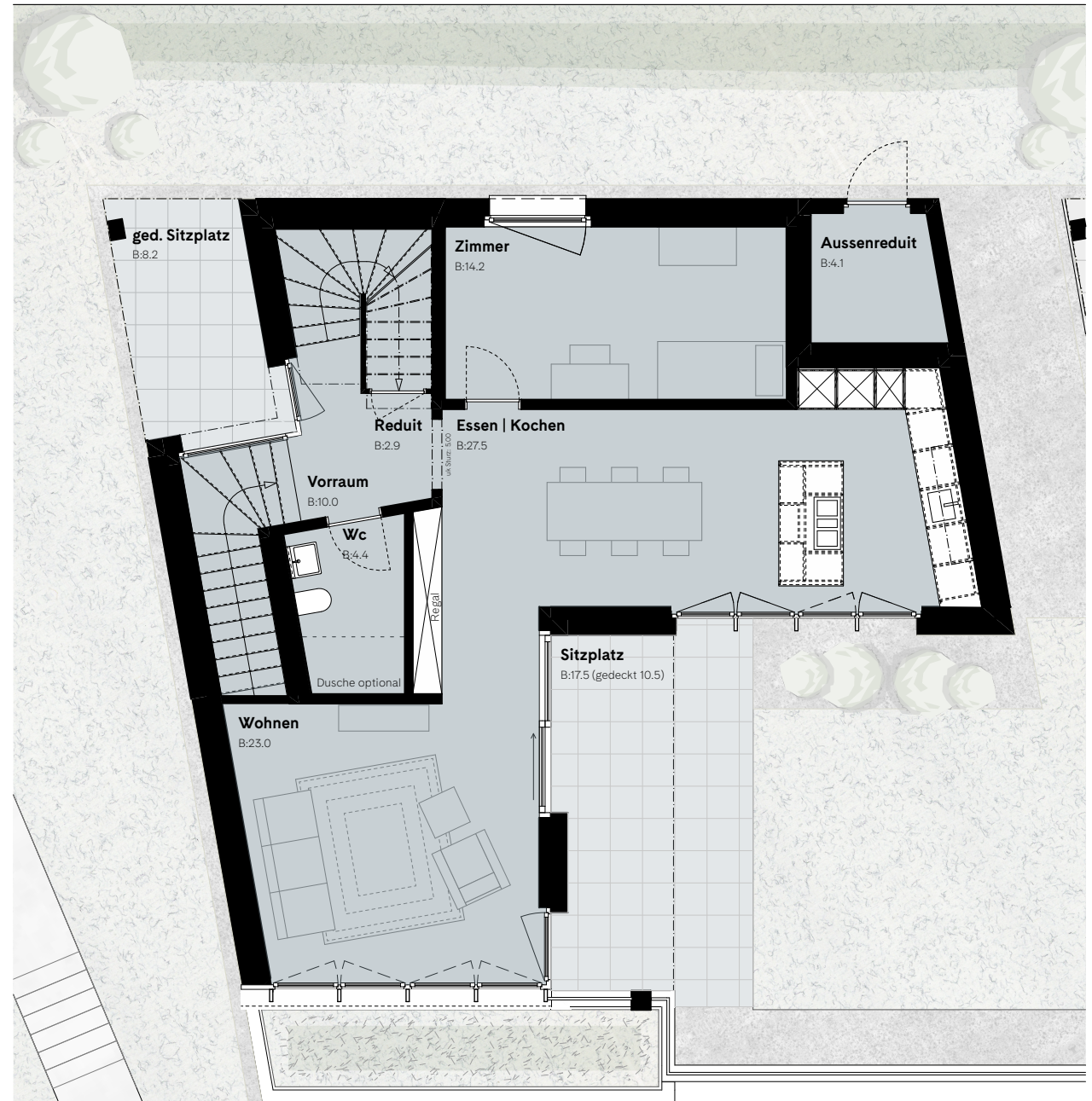


5.5 ZIMMER – EINFAMILIENHAUS INKL. ABSTELLRAUM

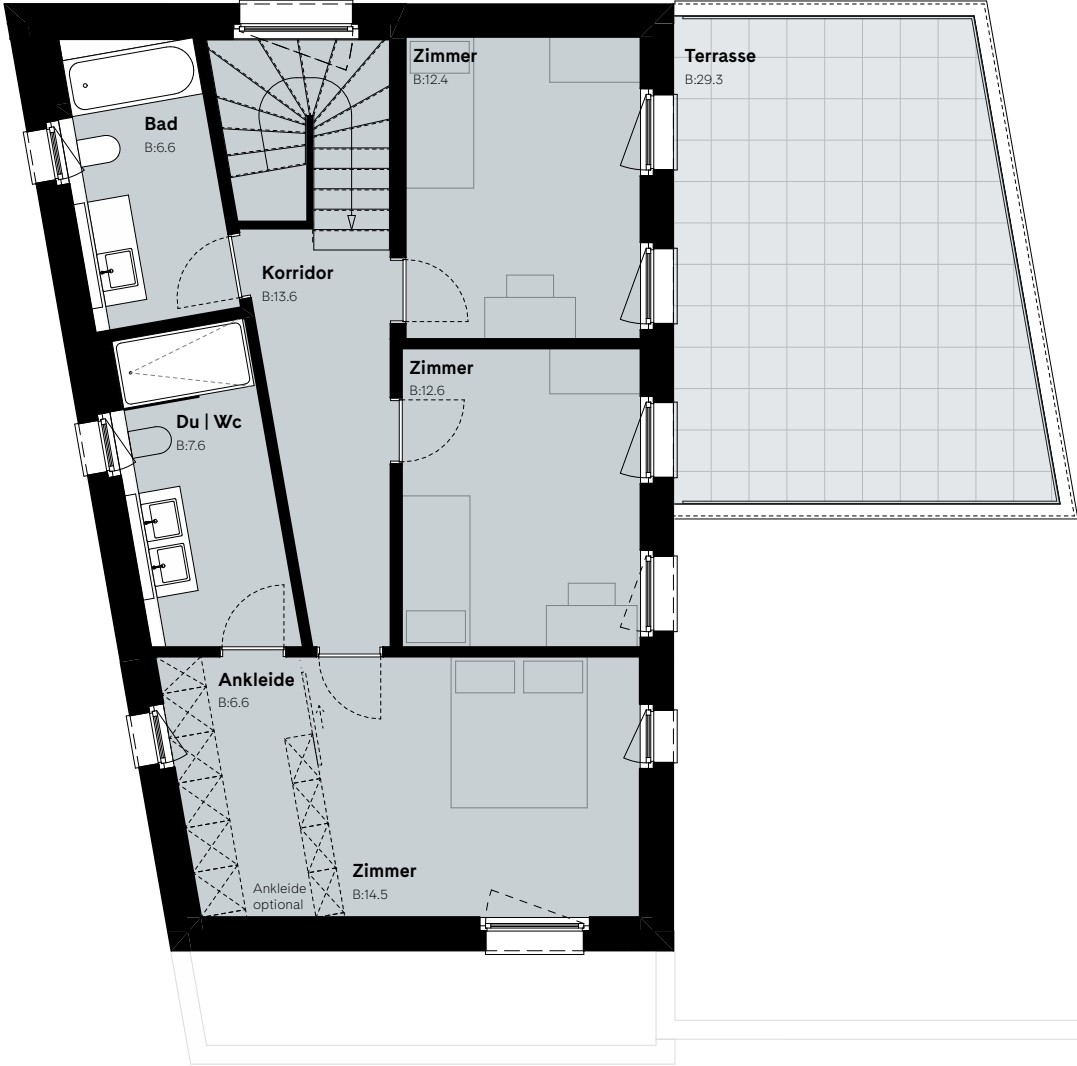
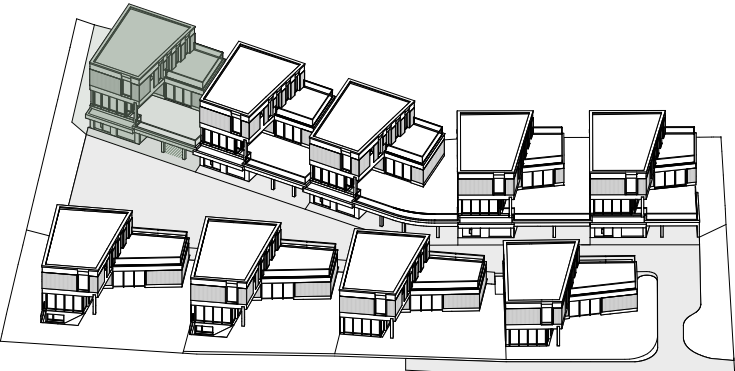
Parzelle ca.	320.6m ²
NGF	270.7m ²
gesamte Aussennutzfläche	55m ²
Sitzplatz	25.7m ²
Terrasse	29.3m ²
Garten	168.5m ²
Garage	18.6m ²
Carport*	32.5m ²

*exkl. Fläche für Nutzungsrecht PP Gisleracherweg 7

1. Obergeschoss 1:100



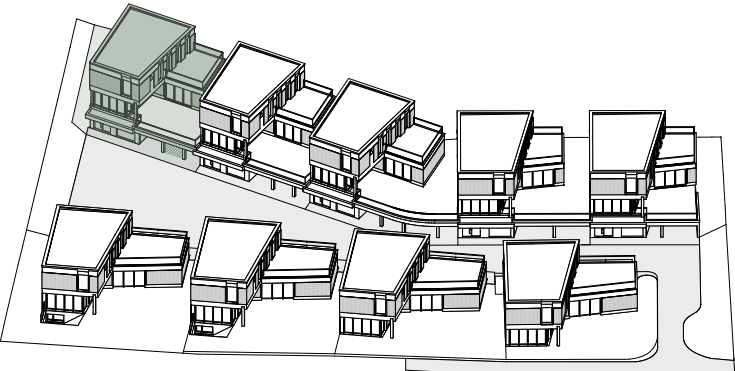
GISLERACHERWEG 10



2. Obergeschoss 1:100

A scale bar showing a distance of 5 meters, divided into 1-meter increments. A north arrow is located to the left of the scale bar.

GISLERACHERWEG 10



Eingangsgeschoss 1:100

A north arrow pointing towards the top-left and a scale bar marked from 0 to 5 meters.